

## **TSPrint 2 features**



## TSPrint 2 features

# Software requirements

We would like to mention that the new TSPrint Server is compatible with TSPrint 1 client, and TSPrint 1 Server is compatible with new TSPrint client. To have all new features enabled, you have to update the client and server part of the installation. Please take a look at the list below for the information on supported remote desktop technologies and operating systems.

### Supported Platforms

- Microsoft RDP
- Citrix ICA
- VMWare VDI

### Operating Systems

#### TSPrint Server:

- Windows 2012 Server
- Windows 2008 R2 Server
- Windows 2008 Server
- Windows 2003 Server
- Windows 8
- Windows 7
- Windows Vista
- Windows XP

#### TSPrint Client:

- Windows 8
- Windows 7
- Windows Vista
- Windows XP
- Windows 2000
- Windows Embedded
- Mac OSX (10.7+)
- Linux
- HP ThinOS

**Note:** 32bit and 64bit operating systems are supported. TSPrint requires minimum .NET 2.0 framework to function properly. In case you experience any issues please make sure that .NET is installed.



## TSPrint 2 features

### TSPrint 2 license system

Until now, TSPrint license system was based on number of remote desktop users which connect to the Server, no matter if they had installed TSPrint client or not. In many cases, especially when only couple of users needed our solution, but the Server had many users which connect to it, our license system wasn't appropriate.

We are glad to inform you the following. In **TSPrint 2**, we implemented an improved license system which counts only users which use TSPrint solution at the same time. For example, if you have one user which needs our solution, but over 30 users connected to the Server you will need to buy a one per TSPrint user license.

In case more users connect then the Per User license allows the last user will not be able to print via TSPrint. You can upgrade your Per User license at any time through our customer portal in case the need arises for additional allowed sessions.

In TSPrint there are two license types: Limited license and Unlimited users license. With limited license you can create Custom licenses. For example, if you have three TSPrint users, you will need to make a custom license with 3 limited licenses, which is \$79 x 3. Unlimited users license can handle unlimited number of users on a single Server.

TSPrint license costs are as follows:

- Limited license: \$79
- Unlimited users license: \$399

Purchase is a onetime payment with free updates and life time support. Also if the Server crashes you can transfer the license for free on your online account.



## TSprint 2 features

### EMF printing

Until now, by default, print job is converted to PDF format and sent to the local printer. Besides PDF there was also an option to use XPS format. In TSprint 2 to improve printing performance, we added a new printer driver, which uses EMF format to spool documents. EMF is a file extension for Enhanced MetaFile, a spool file format used in printing by the Windows operating system. We would like to provide you a short description of its main features.

#### Page by page printing

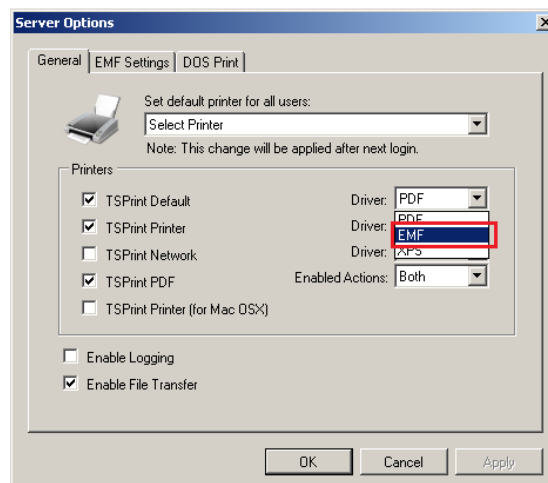
Page by a page printing system allowed you to print on your local printer as soon as the first page is spooled on the server side. Till now TSprint always spooled the whole document on the server side, compressed it and then send it to the local printer. This often introduced a delay when large documents were printed as we had to wait for the document to spool on the server side to send it to the client. With TSprint 2.0 our universal driver splits the document and sends page by page to the client which results in immediate printing as soon as the customer presses the Print button on his application.

#### Better printing results

After we managed to prove that we can drastically improve the speed of printing we also had to make sure that the results were as satisfying as always. Not only did we manage to do that, but we also improved a lot in cases comparing to PDF/XPS format.

#### How to setup/configure EMF?

When you install TSprint by default it will use PDF format, which means EMF will not be enabled. EMF format is enabled for our printers in TSprint Server options/General tab:

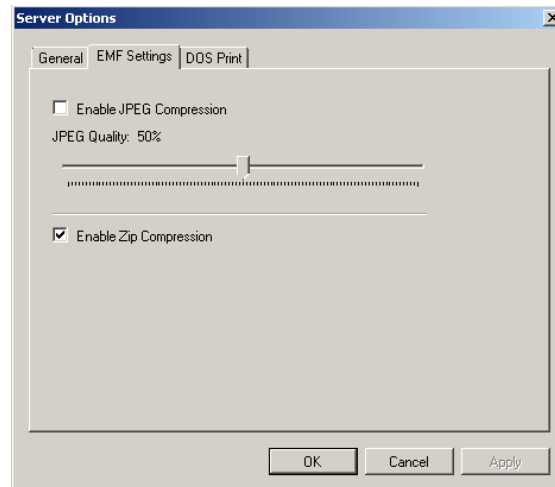


There is also additional tab added in Server options named EMF Settings. In EMF settings tab



### TSPrint 2 features

you can enable JPEG and ZIP compression.



JPEG compression is used to compress images inside EMF format, and also it can be adjusted per wanted quality of your print job. As the quality is lower, printing will be faster. ZIP compression is used during the phase when EMF is sent over remote connection to the local workstation. Print job is compressed, and once it arrives to the local workstation it is extracted, so the local printer can print it.

**Special notice:** since EMF is usually used by Windows operating system, it will support only Windows client machines.

## Dynamic channel technology

So far, TSPrint as any other market solution of this kind used static virtual channels. Static channel had limitations, especially with RemoteApps. For example, when you connect at the same time to two RemoteApps, only the first RemoteApp would work properly.

The reason is the following. The virtual channel API does not allow for multiple instances of the same virtual channel DLL to be loaded within a single process. Because of this, if there are multiple instances of the Remote Desktop ActiveX control running within the same process, only the first instance of the control will be able to load the virtual channel DLL.

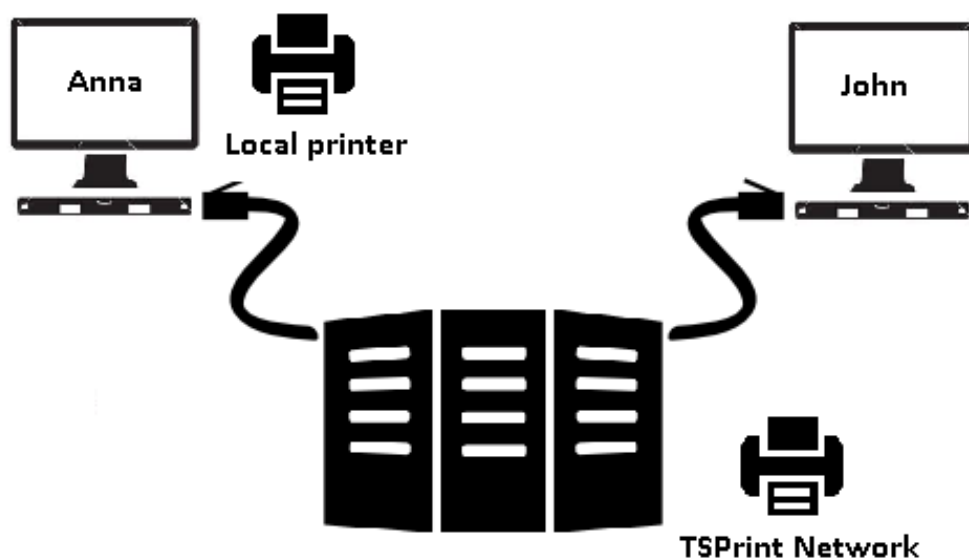
Solution is to adjust our product with new Dynamic Virtual Channels, which we successfully integrated in TSPrint 2. All limitations which came across with static channels, are now gone. Furthermore, integrating virtual channel in TSPrint 2 resulted in improved speed and stability of our product. We are glad to be the first solution on the market which integrated Dynamic Virtual Channels to their product.



## TSprint 2 features

### TSprint Network

Among many functions with TSprint you get three virtual printers: TSprint Default, TSprint Printer, and TSprint PDF. TSprint Default is mapped to the default local printer, while TSprint Printer will open a new window where you can choose any of the local printers and TSprint PDF, which will convert file to PDF on your local or Server side. In TSprint 2 we added a new printer, which we named TSprint Network. Using TSprint Network, you can choose any user local printer, which is connected at the Server. Let us explain through a simple example. John would like to print his document using Anna's printer when both of them are connected to the Server. John on the Server will simply select TSprint network to choose Anna local printer and print his document.

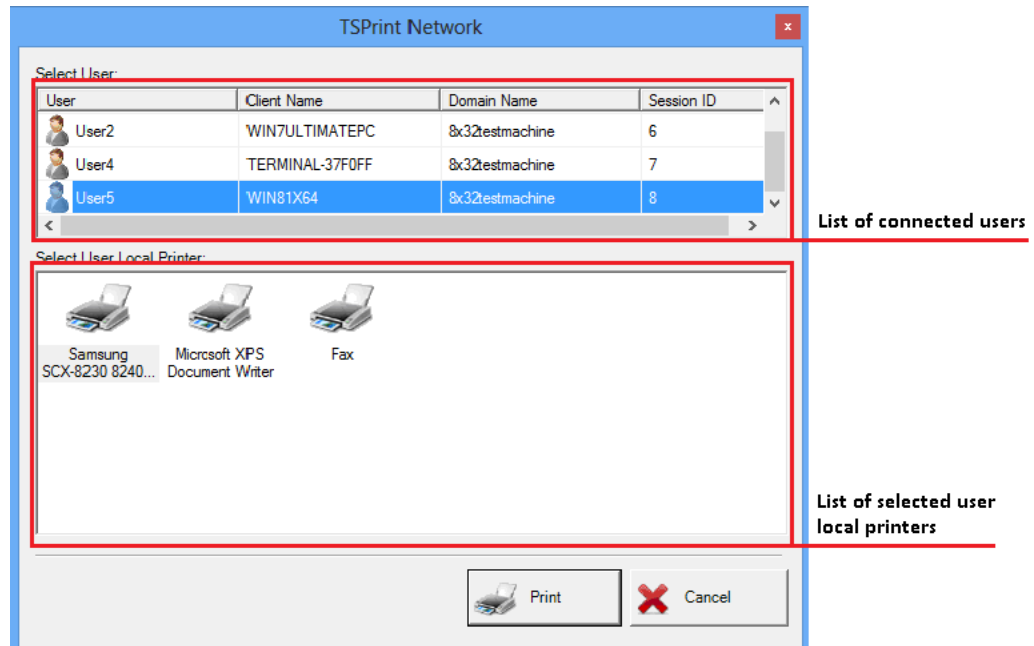


Any user can use another user local printer, once they are connected to the same Server.



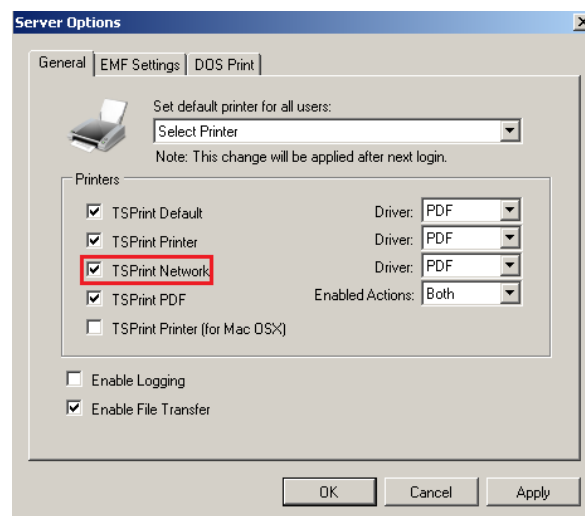
## TSprint 2 features

Let us show an example of a dialog which will show after TSprint Network is selected.



### How to configure Network printer?

When you install TSprint by default, TSprint Network will not be enabled. TSprint Network is enabled in TSprint Server options/General tab:



As any other TSprint printer you can use all three possible drivers: PDF, XPS and EMF.



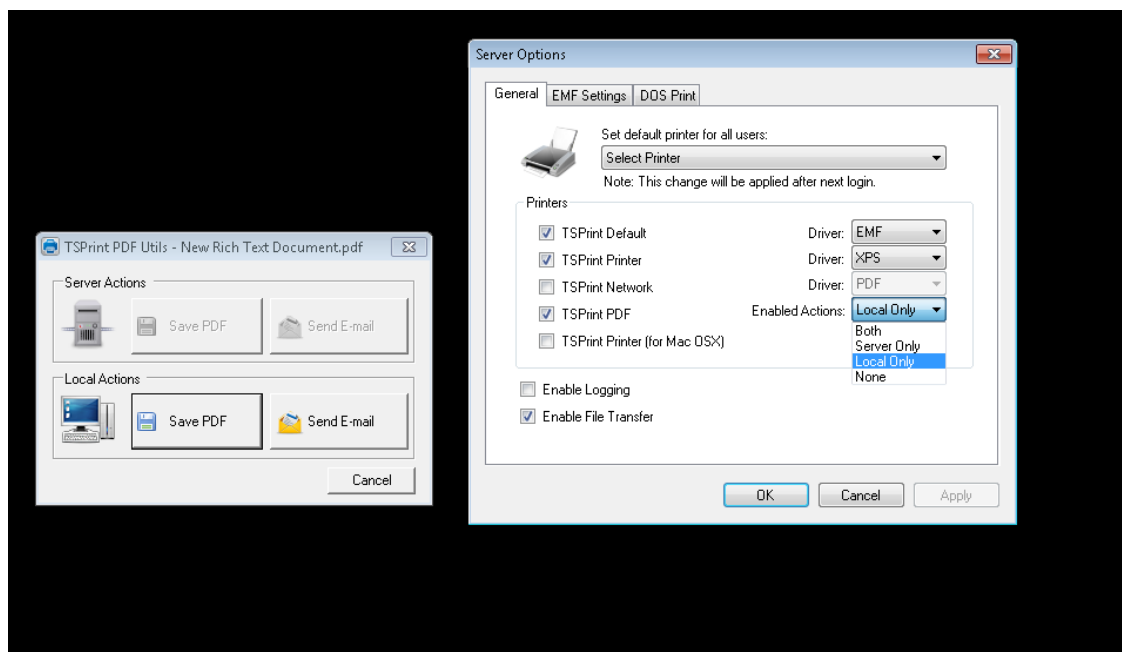
## TSprint 2 features

### TSprint PDF update

In TSprint 2 we added couple of new modes for TSprint PDF printer.  
We have 3 modes:

1. *Server only*, it can be used to store PDF document only on the Server
2. *Client only*, it can be used to store PDF document only on the Client which connects to the Server
3. *Both*, it can be used for Client and Server.
4. *None*, it cannot be used for Client and Server

For example, we enabled “Local Only” mode, and as you can see user can save PDF on the Client side only.



### Additional information

Support email: [support@terminalworks.com](mailto:support@terminalworks.com)

Phone number: [+14077451844](tel:+14077451844)

Active hours: [10 am-10 pm CET](#)